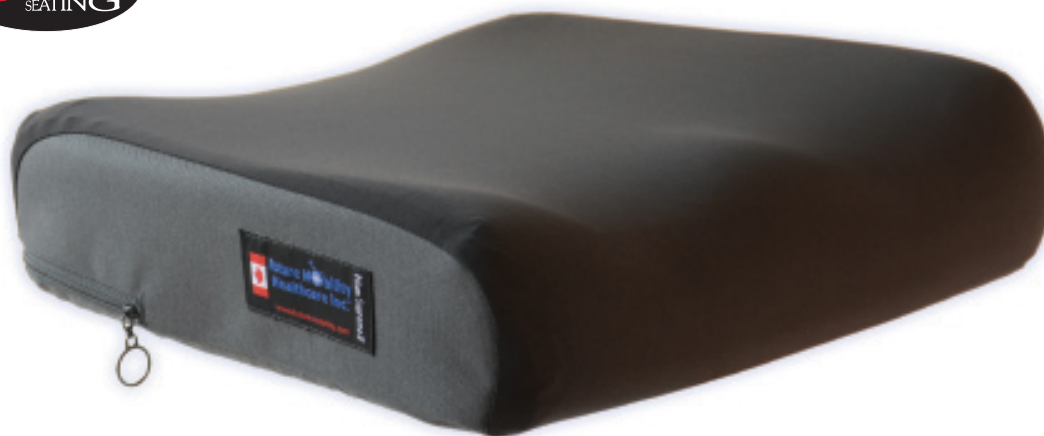
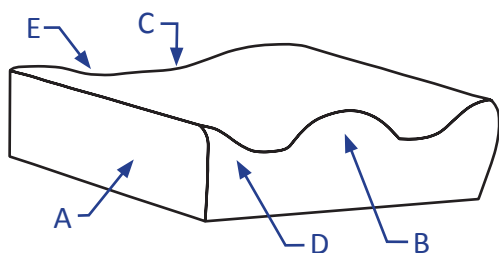


Supreme Cushion



The Prism Supreme Cushion™ was designed for users requiring moderate to high positioning support and provides excellent pressure distribution relief. The anatomically designed firm polyurethane base, with its aggressive leg troughs and abductor contouring, provides superior pelvic stability and leg positioning. A central core of pressure relieving visco-elastic insert under the IT's, allows for excellent immersion for bony prominences. Supreme comfort, supreme positioning and supreme pressure relief—that's the Prism Supreme!



CUSHION THICKNESS

- A- Height at adductor = 5"
- B- Height at abductor = 5"
- C- Height at rear IT = 3 1/4"
- D- Leg Trough = 3 1/4"
- E- Height at rear trochanter = 4 1/4"

Prism Series Cushion		STYLE: Supreme	
Pelvic Obliquity Build-Up			
Part Number	Size W x L	Part Number	Size W x L
POBL.5	Left 1/2"	POBR.5	Right 1/2"
POBL1	Left 1"	POBR1	Right 1"
POBL1.5	Left-1-1/2"	POBR1.5	Right 1-1/2"

Prism Series Cushion		STYLE: Supreme	
Stock Sizes – Same Day Shipment			
ADP CODE: SESFM0015			
Part Number	Size W x L	Part Number	Size W x L
SC1414	14" x 14"	SC1618	16" x 18"
SC1416	14" x 16"	SC1818	18" x 18"
SC1616	16" x 16"	SC1820	18" x 20"

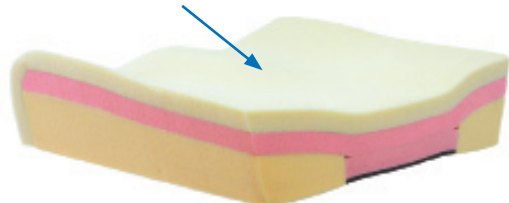
Non-Stock Sizes – Shipment within 3 business days			
ADP CODE: SESFM0020			
Part Number	Size W x L	Part Number	Size W x L
SC1516	15" x 16"	SC1916	19" x 16"
SC1518	15" x 18"	SC1918	19" x 18"
SC1620	16" x 20"	SC1920	19" x 20"
SC1716	17" x 16"	SC2016	20" x 16"
SC1718	17" x 18"	SC2018	20" x 18"
SC1720	17" x 20"	SC2020	20" x 20"

Custom Sizes - Shipment within 7 business days			
ADP CODE: SESFM0025			
Part Number		Size W x L	
SCCUS		Custom	
Supreme Modifications			
Part Number	Size W x L	Part Number	Size W x L
SLDL1	Left 1"	SLDR1	Right 1"
SLDL2	Left 2"	SLDR2	Right 2"

Supreme Cushion



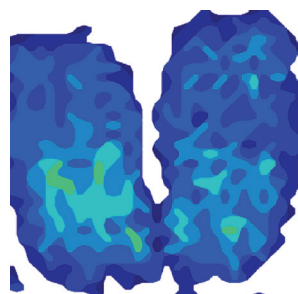
Visco Foam, contours to users body and aids in positioning



Inner Cover and Cushion Layers

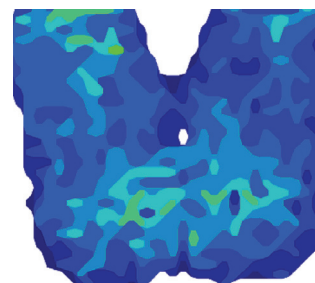
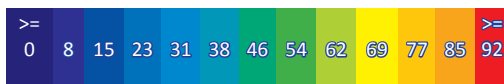
Product Highlights:

- ✓ 3" of visco foam (memory foam) under IT's (Ischial Tuberosity) for superior immersion
- ✓ High density, contour cut layered foam for a consistent, long lasting product
- ✓ 4-way stretch, water resistant inner liner
- ✓ Radius cut to match shape of back upholstery
- ✓ 4-way stretch, breathable outer cover
- ✓ Waterfall front edge for foot propelling comfort
- ✓ Cane cut in rear to allow for correct placement in wheelchair and proper seat depth
- ✓ **Product Weight:** 4 lbs (18"W x 18"L)
User Weight: 250 lbs
Warranty: Two (2) years limited on Cushion and 90 days on cover.



Pressure Map	Supreme
Weight	125 Lbs/57 Kg
Duration	1 hr
Average Pressure	25 mmHg

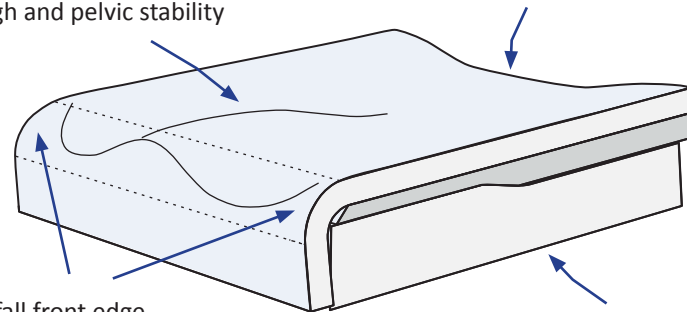
Pressure Reading Scale in mmHG



Pressure Map	Supreme
Weight	200 Lbs/91 Kg
Duration	1 hr
Average Pressure	30 mmHg

Increased medial thigh support for leg trough and pelvic stability

Radius cut to match back upholstery



Medium density memory foam layer for increased comfort

High density pink memory foam for added comfort and pressure relief

Waterfall front edge

Medium density polyurethane foam for superior immersion